

# Overview of the Norfolk Greenways project

9 April 2019



# Overview of the Presentation

Provide an overview of the Norfolk's  
Greenways project

Information on the progress of the project

Opportunities for questions



# Aim of the Project

We are conducting a feasibility study looking to develop a greenway network across the county.

We aim for them to extend across Norfolk and link into the Norfolk Trails network .



# What is a Greenway

Greenways offer a safe route for people and animals to travel.

The make up of these can be varied but is a combination of a strong wildlife corridor and a sustainable travel route.

The Greenways study is focusing on the particular benefits of health, wellbeing, economy, increased biodiversity, alleviation of congestion and air quality improvements.



# How are we going to achieve this?

We will achieve this by completing **3 detailed feasibility studies** looking at

- **Weaver's Way (Aylsham to Stalham)**
- **King's Lynn to Fakenham**
- **King's Lynn to Hunstanton**

We will be working closely with the **Highways Team, UEA, Active Norfolk** and **Sustrans** to develop comprehensive detail on the

- **Costs**
- **Timescales**
- **Economic and Health Benefits**
- **Ecological impacts and proposals**
- **Land ownership**
- **Funding available**

# How are we going to achieve this?

We will also be created a broader **network feasibility study** which will review the other c.20 **disused railway routes** in Norfolk, these will focus to connect **current** and **future** areas of

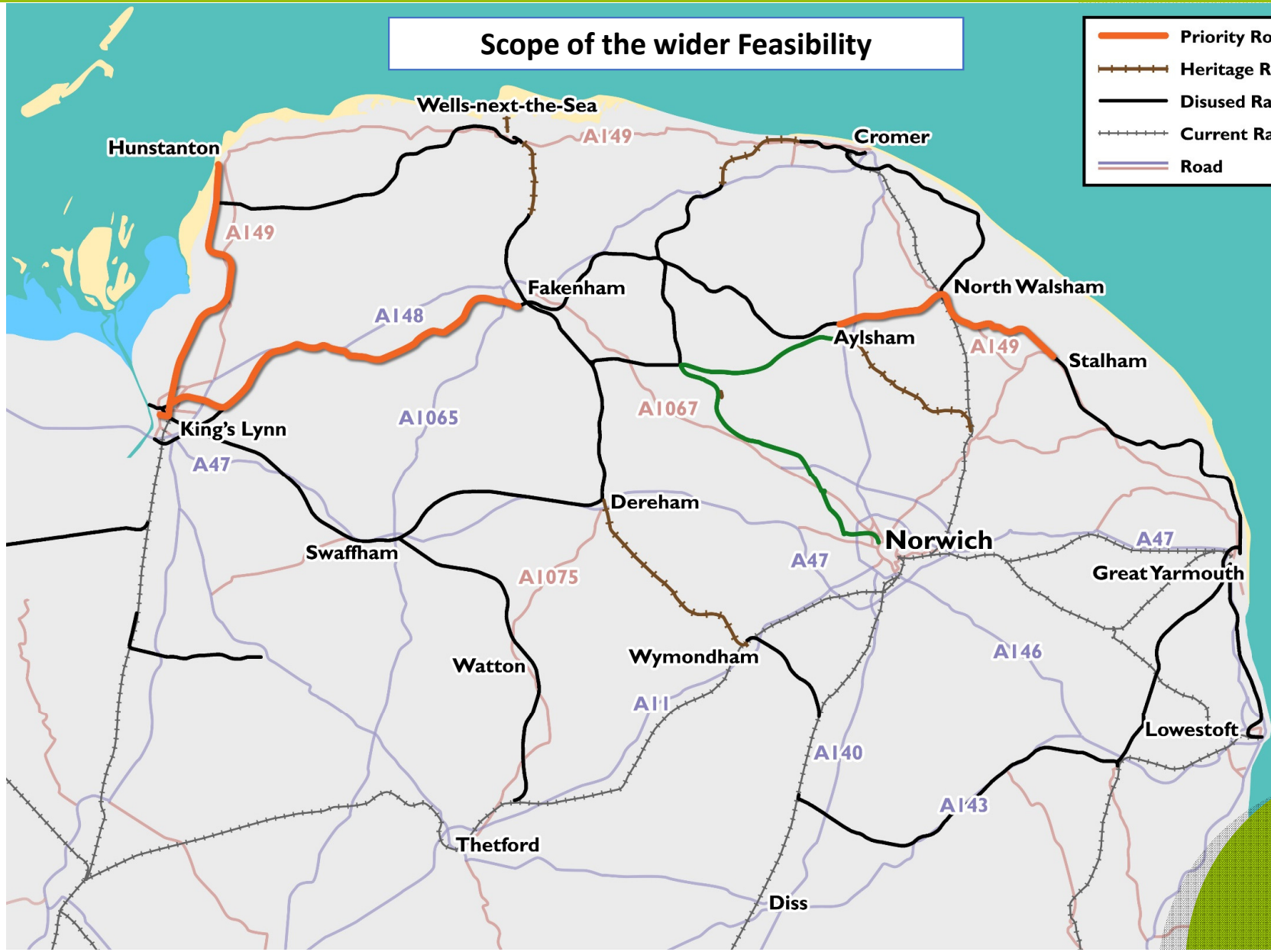
- **Urban areas** and **Market Towns**
- Key areas of **Employment**
- Key areas of **Education**
- Key areas of **Retail**
- Key areas of **Leisure**
- Key areas of **Development**

This information will be collected and stored in a consistent format so we can identify development opportunities for future **greenways** quickly.

# Overview of the Feasibility

# Scope of the wider Feasibility

- Priority Routes
- Heritage Railway
- Disused Railway
- Current Railway
- Road





# Proposed Greenway Route

Improving access onto Weavers' Way from Aylsham

Ecological improvements at Felmingham Station - improving habitat biodiversity

Improve access for all users to the south east of North Walsham

Surface improvements to Weavers' Way to allow an all year surface



# Proposed Greenway Route

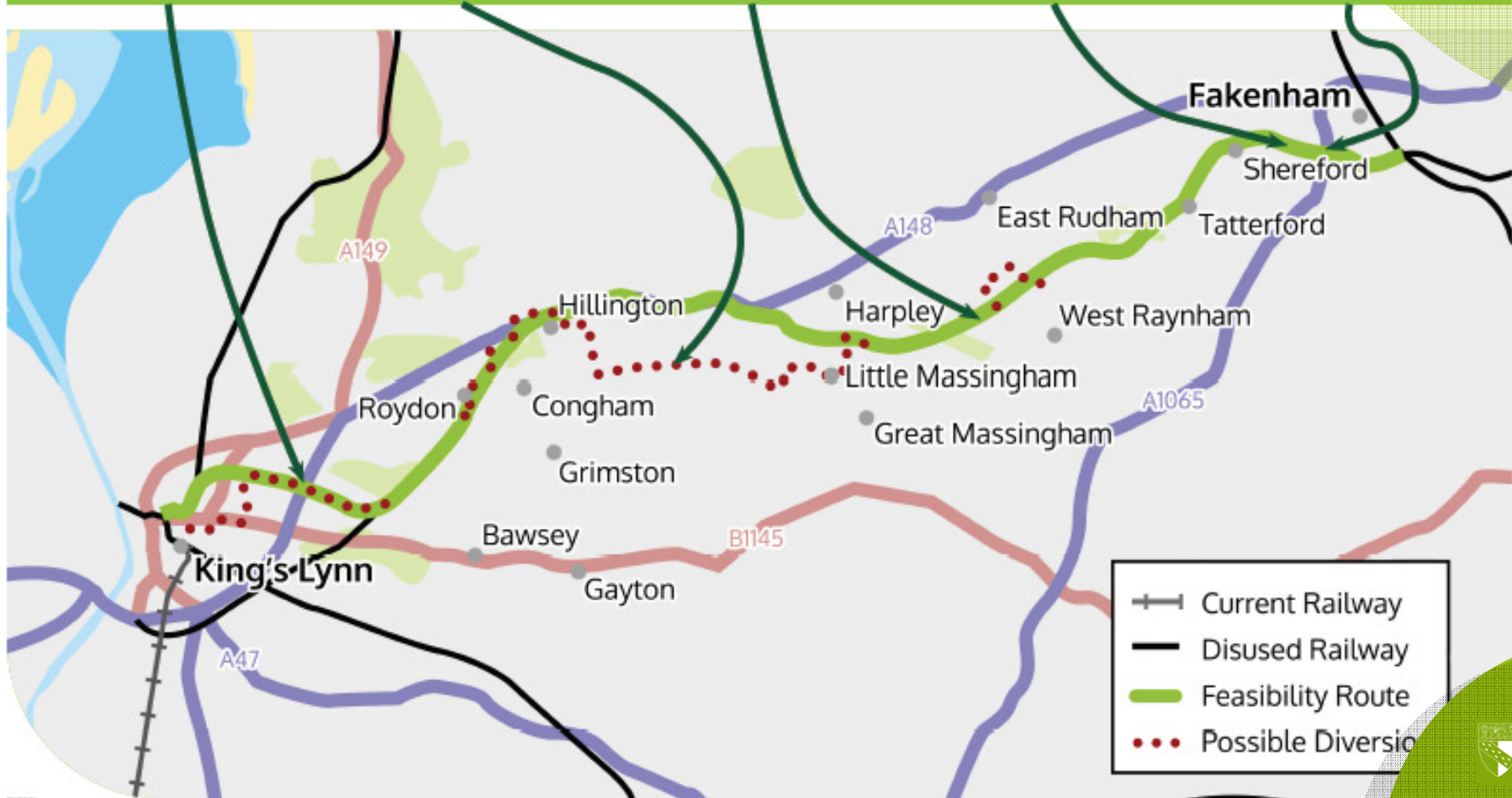
Creating a safe crossing to get past the A149

The A148 runs on the disused railway, so an alternative route will have to be created

Linking communities close to the route

Improve access along the Wensum Walk between Shereford and Fakenham

Improve the crossing of Raynham Road, near Fakenham Garden Centre



# Proposed Greenway Route

Improved access into Hunstanton for more user groups

A safe route between Snettisham and the coast



Creating a safe crossing to get across the A1078, north of King's Lynn

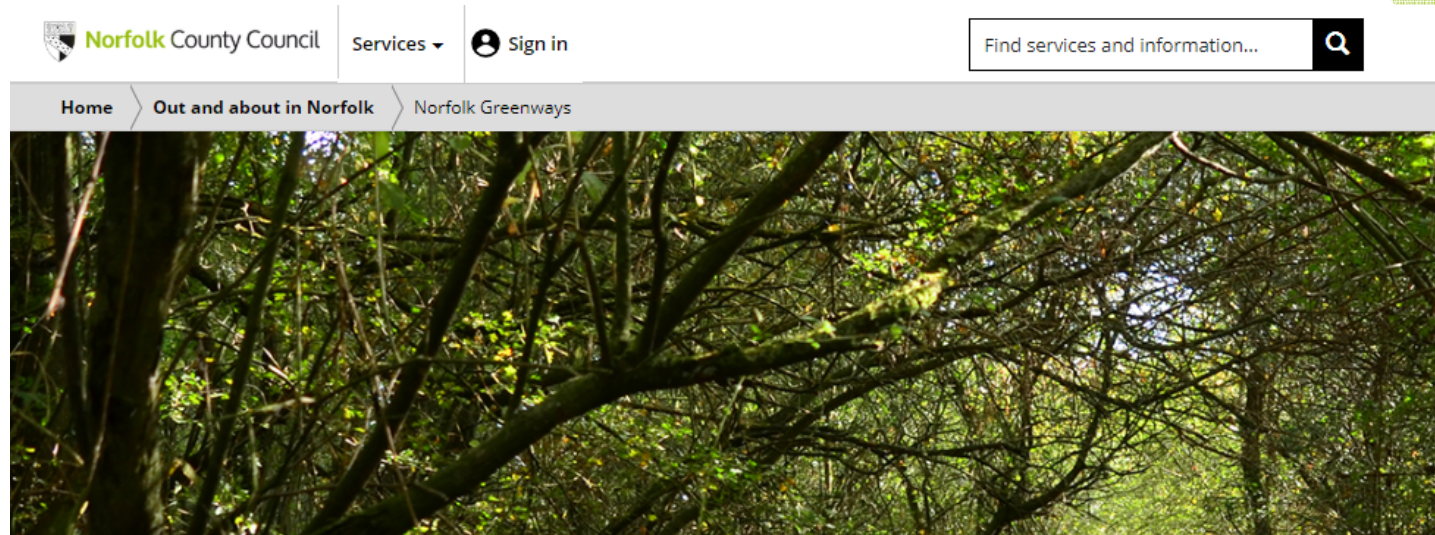
Alternative route to be found to avoid Dersingham Bog Special Site of Scientific Interest

# Latest Updates

## 9 Consultation events with over 250 attendees



# Online Consultation with over 500 responses to the survey



## Norfolk Greenways

We are conducting a feasibility study looking to develop a greenway network across the county. We aim for them to extend across Norfolk and link into the Norfolk Trails network of promoted walking and cycling routes.

Greenways offer a safe route for people and animals to travel. Our study is focusing on the particular benefits of health, wellbeing, economy, increased biodiversity, alleviation of congestion and air quality improvements.

Officers started working on the project in April 2018, focusing on three disused railways:

- Weavers' Way between Aylsham and Stalham
- King's Lynn to Fakenham
- King's Lynn to Hunstanton

We are in the process of contacting communities and stakeholders and intend to hold a series of exhibitions, inviting the public to see our proposals and asking for comments or suggestions, and have

**Sustrans** report on potential routes

**Active Norfolk** report on health and social need and benefits



# Route Valuation



# Key Value Areas

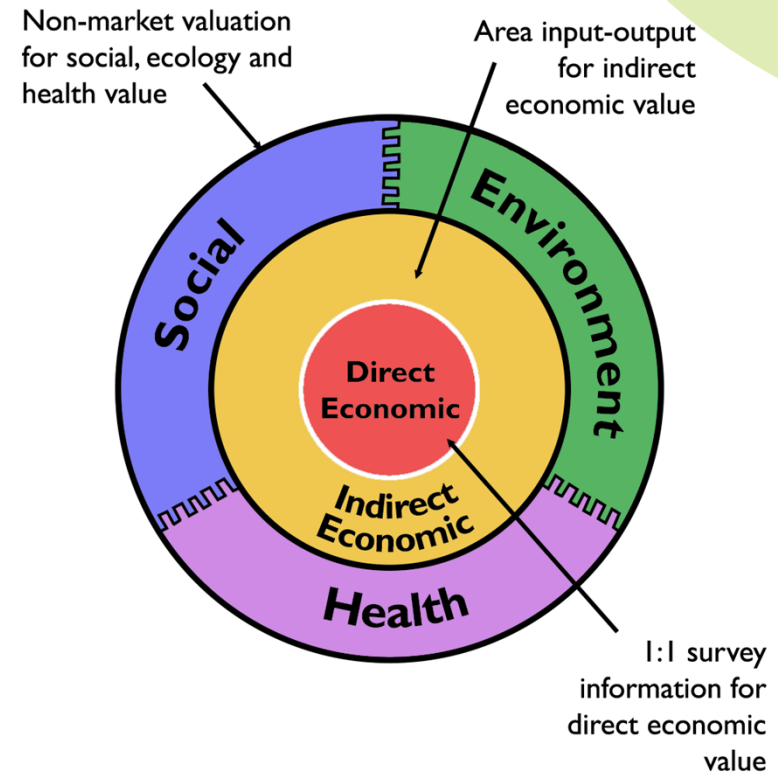
We are working closely with UEA to identify the Value this new infrastructure will bring including the follow value areas;

**Economic-** to local business

**Social-** for the local communities

**Health-** for the users of the new infrastructure

**Environment-** Protecting and improving the environment on the Greenways



# Valuation Methodology- using DFT Toolkits



Department  
for Transport

## TRANSPORT ANALYSIS GUIDANCE

### Guidance for the Technical Project Manager

May 2018

Department for Transport

Transport Analysis Guidance (TAG)

<https://www.gov.uk/transport-analysis-guidance-webtag>



**Norfolk**  
County Council

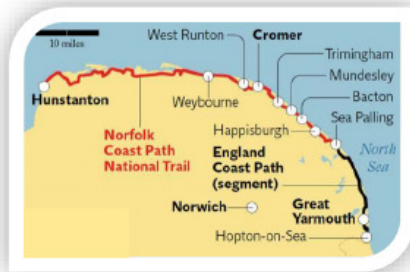
# Valuation Methodology- Direct Economic

1



User Research to Inform Decision-Making  
*Research findings for Norfolk Trails*

June 2018



Prepared by Insight Track Ltd.  
T: 01603 626800  
E: [intouch@insighttrack.co.uk](mailto:intouch@insighttrack.co.uk)



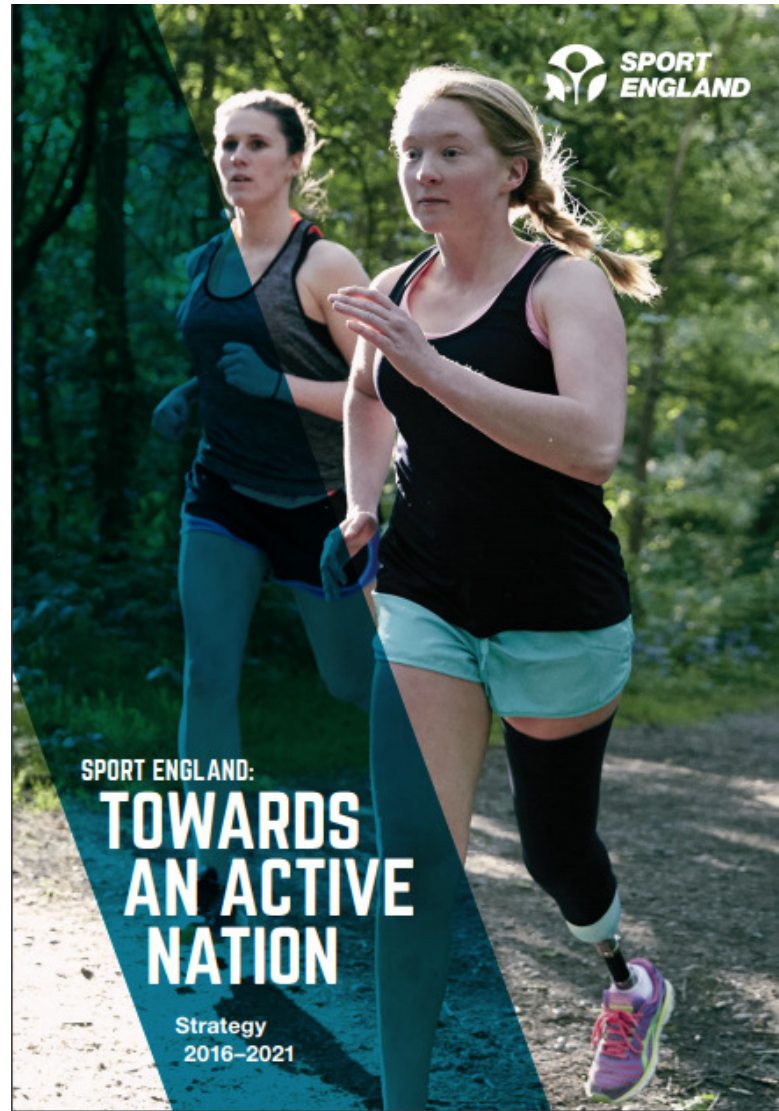
**insight**TRACK



## Valuation Methodology- Indirect Economic



# Valuation Methodology- social and health

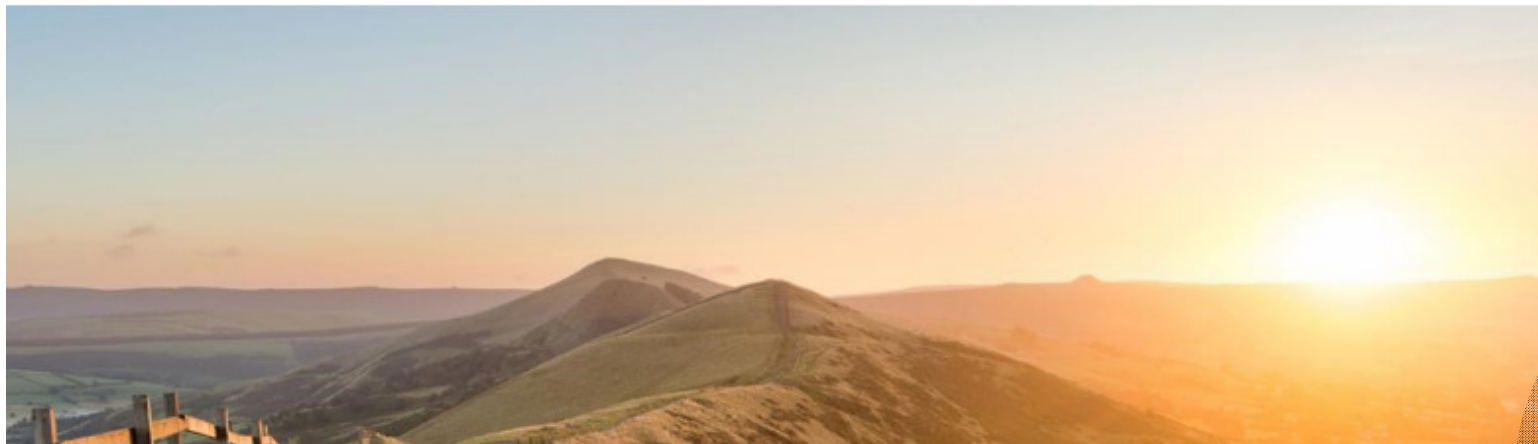


# Valuation Methodology- Environmental



HM Government

A Green Future: Our 25 Year Plan to  
Improve the Environment



**Norfolk**  
County Council

# Questions?

# Thank You



# Working with partners !

## Key Supporting Partners:

ie: Those who consent we will require to carry out work, disturb habitats or gain access, and their support with landowners / Public / Planning permissions.



**Potential Supporting Partners:** Conservation bodies whose support we can seek, for technical advice, funding bids, publicity, and to reciprocate by contributing to their targets and current biodiversity projects.

